

V59 Points

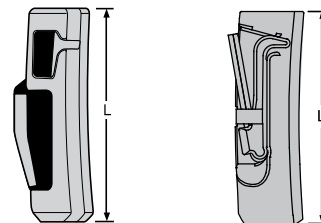
| PART ID | DESCRIPTION* | A LENGTH mm / in | B BIT WIDTH mm / in | C BIT THICKNESS mm / in | D WIDTH AT EARS mm / in | WEIGHT kg / lb |
|---------|--------------------------|------------------------|------------------------------|----------------------------------|----------------------------------|-------------------|
| V59AD | Abrasion Penetration NCL | 348 / 13.70 | 102 / 4.00 | 38 / 1.50 | 164 / 6.46 | 27 / 60 |
| V59AG | Abrasion Heavy NCL | 348 / 13.70 | 179 / 7.06 | 51 / 2.00 | 164 / 6.46 | 29 / 63 |
| V59AR | Abrasion Rock NCL | 359 / 14.12 | 200 / 7.88 | 51 / 2.00 | 164 / 6.46 | 37 / 82 |
| V59ARH | Abrasion Rock Heavy NCL | 359 / 14.12 | 200 / 7.88 | 60 / 2.38 | 164 / 6.46 | 44 / 98 |
| V59DLS | Dragline Special NCL | 295 / 11.60 | 165 / 6.50 | 43 / 1.69 | 164 / 6.46 | 21 / 46 |
| V59RYL | Standard Rock CL | 303 / 11.94 | 152 / 6.00 | 33 / 1.30 | 164 / 6.46 | 20 / 45 |
| V59SD | Chisel CL | 356 / 14.00 | 83 / 3.25 | 25 / 1.00 | 164 / 6.46 | 20 / 45 |
| V59SDX | Chisel Heavy CL | 352 / 13.85 | 102 / 4.00 | 47 / 1.85 | 164 / 6.46 | 23 / 50 |
| V59SHV | Penetration Abrasion CL | 354 / 13.93 | 173 / 6.80 | 58 / 2.30 | 164 / 6.46 | 29 / 63 |
| V59SYL | General Purpose Long CL | 333 / 13.10 | 152 / 6.00 | 27 / 1.08 | 164 / 6.46 | 20 / 45 |
| V59TVY | Twin Pick NCL | 381 / 15.00 | 171 / 6.75 | 22 / 0.85 | 164 / 6.46 | 22 / 49 |
| V59TVYH | Twin Pick Heavy NCL | 350 / 13.78 | 171 / 6.74 | 31 / 1.24 | 164 / 6.46 | 21 / 47 |
| V59TYL | General Purpose NCL | 333 / 13.10 | 165 / 6.50 | 18 / 0.71 | 164 / 6.46 | 24 / 52 |
| V59VY | Pick NCL | 381 / 15.00 | 19 / .75 | 22 / .85 | 164 / 6.46 | 19 / 42 |
| V59VYH | Pick Heavy NCL | 350 / 13.78 | 21 / 0.84 | 36 / 1.42 | 164 / 6.46 | 19 / 42 |

*CL: Centerline Design; NCL: Non-Centerline Design

Locking Pins

| PART ID | DESCRIPTION | L LENGTH mm/in | WEIGHT kg/lb |
|---------|----------------------|----------------------|-----------------|
| V59HPN | Super V Pin Hot Slag | 121 / 4.75 | .46 / 1.02 |
| V59PN | Super V Pin Assy | 121 / 4.75 | .47 / 1.03 |

V59 Standard Pin V59 Hot Slag Pin

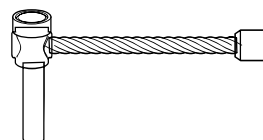


Pin Rebuild Kits

| PART ID | COMMENTS | WEIGHT kg/lb |
|--------------|--------------------------------|-----------------|
| V51-59TR/KIT | STD TAKE-UP REBUILD F/10 PINS | .6 / 1.3 |
| V59-61HR/KIT | HOT SLAG REBUILD FOR 10 PINS | .8 / 1.8 |
| V59-61LR/KIT | STD LOCK REBUILD KIT F/10 PINS | .3 / .7 |

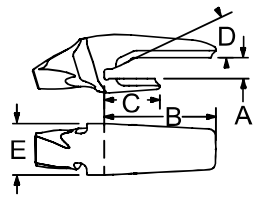
Pin Removal Tool

| PART ID | DESCRIPTION | WEIGHT kg/lb |
|-------------|------------------|-----------------|
| V39-V61RT-1 | Pin Removal Tool | 2.6 / 5.6 |

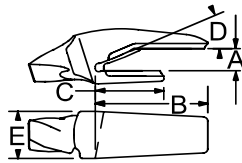


ESCO SUPER V® TOOTH SYSTEM V59

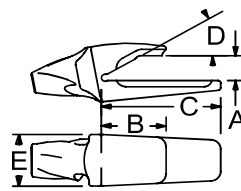
Type 4



Type 5



Type 8

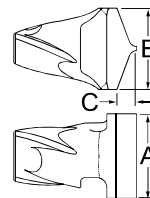


Weld-on Adapters

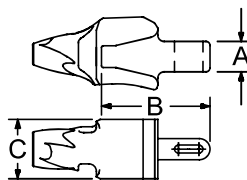
| PART ID | TYPE | DESCRIPTION | A LIP THICKNESS mm/in | B TOP LEG mm/in | C BOTTOM LEG mm/in | D RAMP ANGLE deg | E ADAPTER WIDTH mm/in | NOSE ANGLE deg | WEIGHT kg/lb | MACHINE TYPE |
|---------------------|------|---------------------|--------------------------------|--------------------------|-----------------------------|---------------------------|--------------------------------|----------------------|-----------------|---------------------------|
| Excavator | | | | | | | | | | |
| 5857A-V59 | 8 | 1-1/2 Bottom Leg | 64 / 2.50 | 176 / 6.94 | 325 / 12.81 | 30 | 152 / 6.00 | 10 | 36 / 79 | EXC |
| 3858-V59 | 4 | 1-1/2 Top Leg | 70 / 2.75 | 330 / 13.00 | 168 / 6.62 | 30 | 152 / 6.00 | 10 | 38 / 84 | DEMAG H55 HFS/ H65 EXC |
| 3811-V59 | 4 | 1-1/2 Top Leg | 64 / 2.50 | 330 / 13.00 | 168 / 6.62 | 30 | 152 / 6.00 | 10 | 37 / 82 | |
| Wheel Loader | | | | | | | | | | |
| 1828LB-V59 | 5 | 1-1/2 Top Leg Spade | 64 / 2.50 | 343 / 13.50 | 216 / 8.50 | 30 | 152 / 6.00 | 17 | 43 / 95 | FEL |
| 1828RB-V59 | 5 | 1-1/2 Top Leg Spade | 64 / 2.50 | 343 / 13.50 | 216 / 8.50 | 30 | 152 / 6.00 | 17 | 42 / 93 | FEL |
| 1829B-V59 | 4 | 1-1/2 Top Leg | 64 / 2.50 | 343 / 13.50 | 216 / 8.50 | 30 | 152 / 6.00 | 17 | 42 / 92 | FEL |

Weld-on Nose

| PART ID | DESCRIPTION | A WIDTH mm/in | B HEIGHT mm/in | C J-GROOVE mm/in | WEIGHT kg/lb |
|---------|-------------|---------------------|----------------------|------------------------|-----------------|
| WN-V59 | Weldon Nose | 152 / 6.00 | 178 / 7.00 | 39 / 1.54 | 20 / 43 |



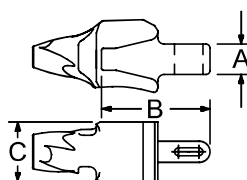
Type 31



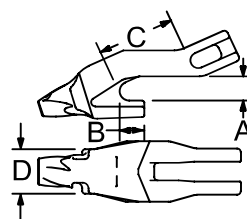
Horn Adapters

| PART ID | TYPE | DESCRIPTION | A SHANK HEIGHT mm/in | B SHANK LENGTH mm/in | C WIDTH mm/in | WEIGHT kg/lb | SPOOL ID | WEDGE ID* | LIP SERIES | MACHINE TYPE |
|---------|------|-------------|-------------------------------|-------------------------------|---------------------|-----------------|-------------|--------------|---------------|-----------------|
| 158-V59 | 31 | Horn Style | 78 / 3.06 | 255 / 10.05 | 152 / 6.00 | 37 / 82 | 58SPB | 58W1 OR 58W2 | C58 | BACKHOE |

Type 28



Type 29



ZL Adapters

| PART ID | TYPE | DESCRIPTION | NOSE ANGLE deg | A LEG OPENING mm/in | B BOTTOM LEG mm/in | C WIDTH mm/in | D WEDGE SLOT mm/in | WEIGHT kg/lb | C-CLAMP ID | WEDGE ID | LIP SERIES |
|----------|------|-------------------------|----------------------|------------------------------|-----------------------------|---------------------|-----------------------------|-----------------|------------|----------|------------|
| 445B-V59 | 29 | Zipper Lip 2 Leg Corner | 17 | 64 / 2.50 | 83 / 3.27 | 152 / 6.00 | 260 / 10.25 | 73 / 162 | R418CL | R414W | 60R, 160R |
| 444B-V59 | 28 | Zipper Lip 2 Leg | 17 | 64 / 2.50 | 356 / 14.00 | 152 / 6.00 | 199 / 7.84 | 66 / 145 | R418CL | R414W | 60R, 160R |