

### V39 Points

PART ID	DESCRIPTION*	A	B	C	D	WEIGHT
		LENGTH	BIT	BIT	WIDTH AT	
		mm / in	WIDTH	THICKNESS	EARS	kg / lb
			mm / in	mm / in	mm / in	
V39AD	Abrasion Penetration NCL	276 / 10.88	73 / 2.88	29 / 1.14	122 / 4.80	13 / 28
V39AR	Abrasion Rock NCL	271 / 10.68	149 / 5.86	39 / 1.52	122 / 4.80	16 / 35
V39RYL	Standard Rock CL	229 / 9.00	121 / 4.75	25 / 1.00	122 / 4.80	9 / 20
V39S8F	Flare CL	279 / 11.00	203 / 8.00	13 / 0.53	122 / 4.80	13 / 28
V39SDX	Chisel Heavy CL	267 / 10.50	74 / 2.90	35 / 1.36	122 / 4.80	10 / 22
V39SHV	Penetration Abrasion CL	262 / 10.31	133 / 5.25	40 / 1.57	122 / 4.80	11 / 25
V39SYL	General Purpose Long CL	257 / 10.10	121 / 4.75	23 / 0.91	122 / 4.80	10 / 21
V39TVY	Twin Pick NCL	297 / 11.70	130 / 5.12	18 / 0.69	122 / 4.80	9 / 21
V39TVYH	Twin Pick Heavy NCL	261 / 10.26	127 / 5.01	23 / .89	123 / 4.84	9 / 19
V39TYL	General Purpose NCL	257 / 10.10	127 / 5.00	15 / 0.60	122 / 4.80	10 / 22
V39TYLCE	Non-Twist Long GP NCL	257 / 10.10	127 / 5.00	15 / 0.60	122 / 4.80	10 / 22
V39VY	Pick NCL	297 / 11.70	14 / 0.55	18 / 0.69	122 / 4.80	8 / 17
V39VYH	Pick Heavy NCL	261 / 10.26	16 / 0.63	27 / 1.06	123 / 4.84	8 / 17

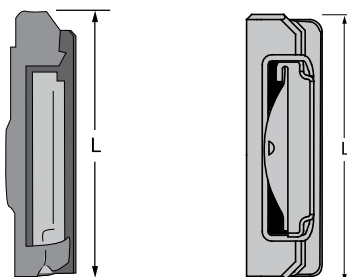
\*CL: Centerline Design; NCL: Non-Centerline Design

### Locking Pins

PART ID	DESCRIPTION	L	WEIGHT
		LENGTH	kg/lb
		mm/in	
V39HPN	Super V Pin Hot Slag	95 / 3.73	.23 / .5
V39PN	Super V Pin	95 / 3.73	.17 / .39

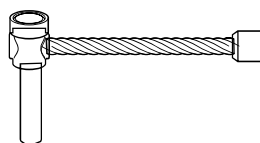
V39 Standard Pin

V39 Hot Slag Pin

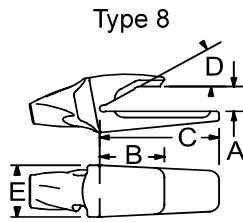
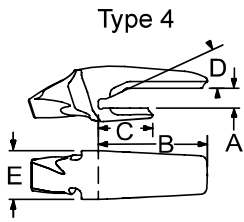


### Pin Removal Tool

PART ID	DESCRIPTION	WEIGHT
		kg/lb
V39-V61RT-1	Pin Removal Tool	2.6 / 5.6

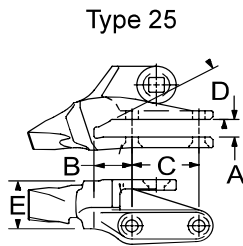
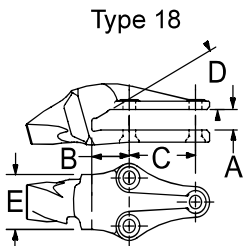


## ESCO SUPER V® TOOTH SYSTEM V39



### Weld-on Adapters

PART ID	TYPE	DESCRIPTION	A LIP THICKNESS mm/in	B TOP LEG mm/in	C BOTTOM LEG mm/in	D RAMP ANGLE deg	E ADAPTER WIDTH mm/in	NOSE ANGLE deg	WEIGHT kg/lb	MACHINE TYPE
<b>Excavator</b>										
5856-V39	8	1-1/2 Bottom Leg	51 / 2.00	145 / 5.70	264 / 10.38	30	114 / 4.50	10	15.5 / 34.1	EXC
3810A-V39	4	1-1/2 Top Leg	44 / 1.75	241 / 9.50	133 / 5.25	30	114 / 4.50	10	14.8 / 32.6	EXC
3882A-V39	4	1-1/2 Top Leg	40 / 1.50	241 / 9.50	133 / 5.25	30	114 / 4.50	10	16 / 35	EXC
<b>Wheel Loader</b>										
1837A-V39	4	1-1/2 Top Leg	51 / 2.00	248 / 9.75	124 / 4.88	30	114 / 4.50	17	18 / 40	FEL CAT 988



### Bolt-on Adapters

PART ID	TYPE	DESCRIPTION	A LIP THICKNES S mm/in	B 1st BOLT HOLE mm/in	C 2nd BOLT HOLE mm/in	D RAMP ANGLE deg	E ADAPTER WIDTH mm/in	NOSE ANGLE deg	WEIGHT kg/lb	BOLTS (qty) SIZE (in)	MACHINE TYPE
5750-V39	18	2 Leg 3 Bolt	40 / 1.57	85 / 3.34	150 / 5.91	29	114 / 4.50	17	18 / 40	(3) 1X4-3/4 PB	KOM WA500
5766R-V39	25	3 Leg Corner 3 Bolt	40 / 1.57	85 / 3.34	150 / 5.91	29	114 / 4.50	17	19 / 42	(2) 1X4-3/4 PB (1) 1-1/4X4 PB	KOM WA500
5766L-V39	25	3 Leg Corner 3 Bolt	40 / 1.57	85 / 3.34	150 / 5.91	29	114 / 4.50	17	19 / 42	(2) 1X4-3/4 PB (1) 1-1/4X4 PB	KOM WA500

### Weld-on Nose

PART ID	DESCRIPTION	A WIDTH mm/in	B HEIGHT mm/in	C J-GROOVE mm/in	WEIGHT kg/lb
WN-V39	Weldon Nose	114 / 4.50	115 / 4.54	28 / 1.12	8 / 17

